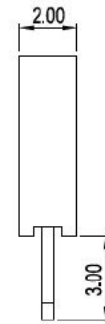


SM C02 6801 XX BS

N = No. of Contact / 2



SM C02 6801 XX AS

N = No. of Contact

Notes:

1. Electrical Characteristics:

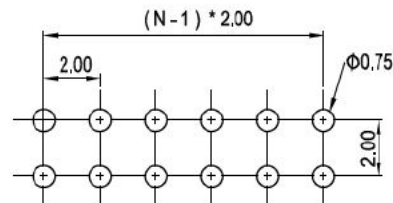
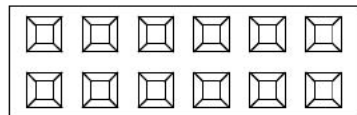
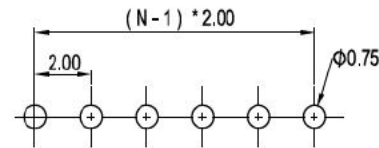
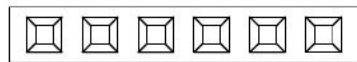
- 1. 1 Contact Resistance: 20mΩ Max
- 1. 2 Dielectric Withstanding Voltage: 600V AC(rms) for 1 Minute
- 1. 3 Insulation Resistance: 1000mΩ Min
- 1. 4 Current Rating: 3A
- 1. 5 Voltage Rating: 250V AC rms

2. Environment Characteristics:

- 2. 1 Temperature: -40°C ~ +105°C

3. Materials:

- 3. 1 Contact Materials: Copper Alloy
- 3. 2 Contact Plating: Tin or Gold plate
- 3. 3 Insulator Materials: PBT, Black, UL94V-0
or High temperature Materials like PA46/PA6T/PA9T



Recommend P.C.B Layout

SM C02 6801 XX BS, H=6,35mm

Female Header Dual Rows, RM 2,00mm, Straight

SM C02 6801 XX AS, H=6,35mm

Female Header Singl Row, RM 2,00mm, Straight

TOLERANCE		SCHMID-M
SCALE	UNIT mm	
DRAW Walter	DATE 24.10.2022	TITLE
CHECK Vanda	REV	SM C02 6801 XX BS, H=6,35mm SM C02 6801 XX AS, H=6,35mm
		DESCRIPTION
		Female Header, RM2,00, Straight